

- [LinkedIn](#)
 - [Deutsch](#)
 - [Nederlands](#)
 - [Imprint / Data Protection](#)

 -  [Deutsch German de](#)
 -  [English English en](#)
 -  [Nederlands Dutch nl](#)
-



- [About Optimodal](#)
 - [Basic Principles](#)
 - [Our Mission](#)
 - [Our Ethics](#)
 - [Our Shareholders](#)
 - [Our Management](#)
 - [Our Partners](#)
 - [Figures, Data, Facts](#)
 - [Charity](#)
 - [Services](#)
 - [Basic Principles](#)
 - [Agency Activities](#)
 - [Rail Connections](#)
 - [Barge Connections](#)
 - [Trucking](#)
 - [Surcharges Diesel/BAF](#)
 - [Water Level/LWS](#)
 - [News](#)
 - [Archive](#)
 - [Media](#)
 - [Media](#)
 - [Downloads](#)
 - [Contact](#)
 - [Career](#)
 - [Search](#)
 - [Menu Menu](#)
-

About Optimodal

- [Basic Principles](#)
 - [Mission](#)
 - [Ethics](#)
 - [Shareholders](#)
 - [Management](#)
 - [Partners](#)
 - [Data](#)
 - [Charity](#)
-

Basic Principles

Optimodal Nederland B.V. is a neutral logistics provider, whose strength is the container-transport into the European hinterland by rail, water and road. The execution of services as a reliable agent for rail-operators completes the portfolio.

The company has been founded in 1992 and is situated in Rotterdam. The shareholders of the unlisted company are DB Cargo Nederland NV with 24.3 percent of the shares, as well as Kombiverkehr Intermodal Services AG, Basel who owns 75.7 percent.

With the help of our sister company Kombiverkehr Intermodal Services GmbH, Hannover, we do operate an agency in Neuss since January 2009. In 2016 an additional agency has been established in Germany's biggest port, Hamburg.

Together with our environmental- and quality-driven customers, we do pursue the great goal, to develop the range of product- and service for the multimodal container operation. In order to guarantee the greatest possible flexibility and reliability, we cooperate with leading and established partners in the intermodal transport world. This results in the outstanding feature of connecting almost all European industrial locations with the western ports.

Our Mission

It is our highest claim that you can rely on the reliable handling of the transport of your containers without restrictions. Our experienced experts in Rotterdam and the agencies in Neuss and Hamburg are personally committed to you. We grow with our customers and optimise our professionalism.

Our aim is to cover long distances with the environmentally friendly modes of transport rail and inland waterways and, if possible, to only cover the first and last mile by truck.

Together with our customers we thus make a significant contribution to the preservation of our planet.

For our children and for our future!

Our Ethics

This order should remind us of the most important characteristics of our interpersonal relationships and the social behaviour of all people around us and encourage us to behave as every individual employee of our company and also our customers may expect from us. We therefore jointly strive to carry out our professional activities in accordance with these guidelines and thus make an important contribution to safeguarding and developing the continued existence of Optimodal Nederland B.V.

For the complete version please push the PDF button.

PDF Ethics

Our Shareholders

The shares of the non-listed company are held by DB Cargo Nederland N.V., Utrecht with 24.34 percent and Kombiverkehr Intermodal Services AG, Basel with 75.66 percent.

The members of the Supervisory Board actively support the managing directors.

Heiko Krebs – Chairman
Managing Director
Kombiverkehr Deutsche Gesellschaft für kombinierten
Güterverkehr mbH & Co KG

Detlef Brendemühl
Managing Director
Kombiverkehr Intermodal Services GmbH

Frank Erschkat
Manager Intermodal Sales Division
DB Cargo AG

DB Cargo Nederland NV
Kombiverkehr Intermodal Services AG

Our Management

We represent competence, loyalty, reliability and continuity.



Karsten Scheidhauer
Managing Director



Rémon Kerkhof
Deputy Managing Director



Sven Steffens
Branch Manager Hamburg



Bernd Jäniche
Branch Manager Neuss



David Wientjes
Supervisor Operations
Rotterdam



Timo Stamm
Supervisor Operations Neuss



Katja Benteler
Operations Manager



Jeroen Dirks
Supervisor Administration

Our Partners

Partnership – For Optimodal not just a meaningless phrase, but a word with great relevance.

Our partners help us to keep the promised reliability of our services at the highest level. We would like to thank:

[KombiRail Europe B.V.](#)

[KombiRail Europe B.V.](#)



Kom

[HTS Group](#)

[HTS Group](#)



[Kombiverkehr Deutsche Gesellschaft](#)

[für kombinierten Güterverkehr mbH & Co. KG](#)

[Kombiverkehr Deutsche Gesellschaft](#)

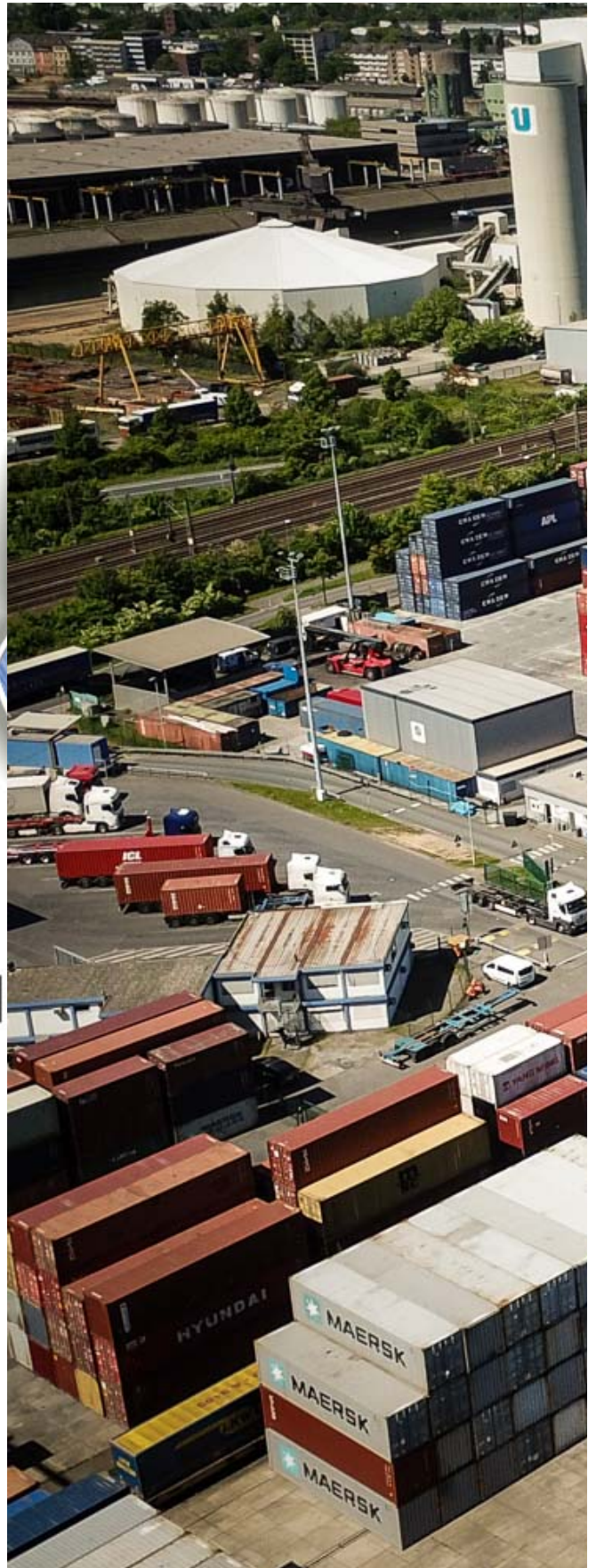
[für kombinierten Güterverkehr mbH & Co. KG](#)

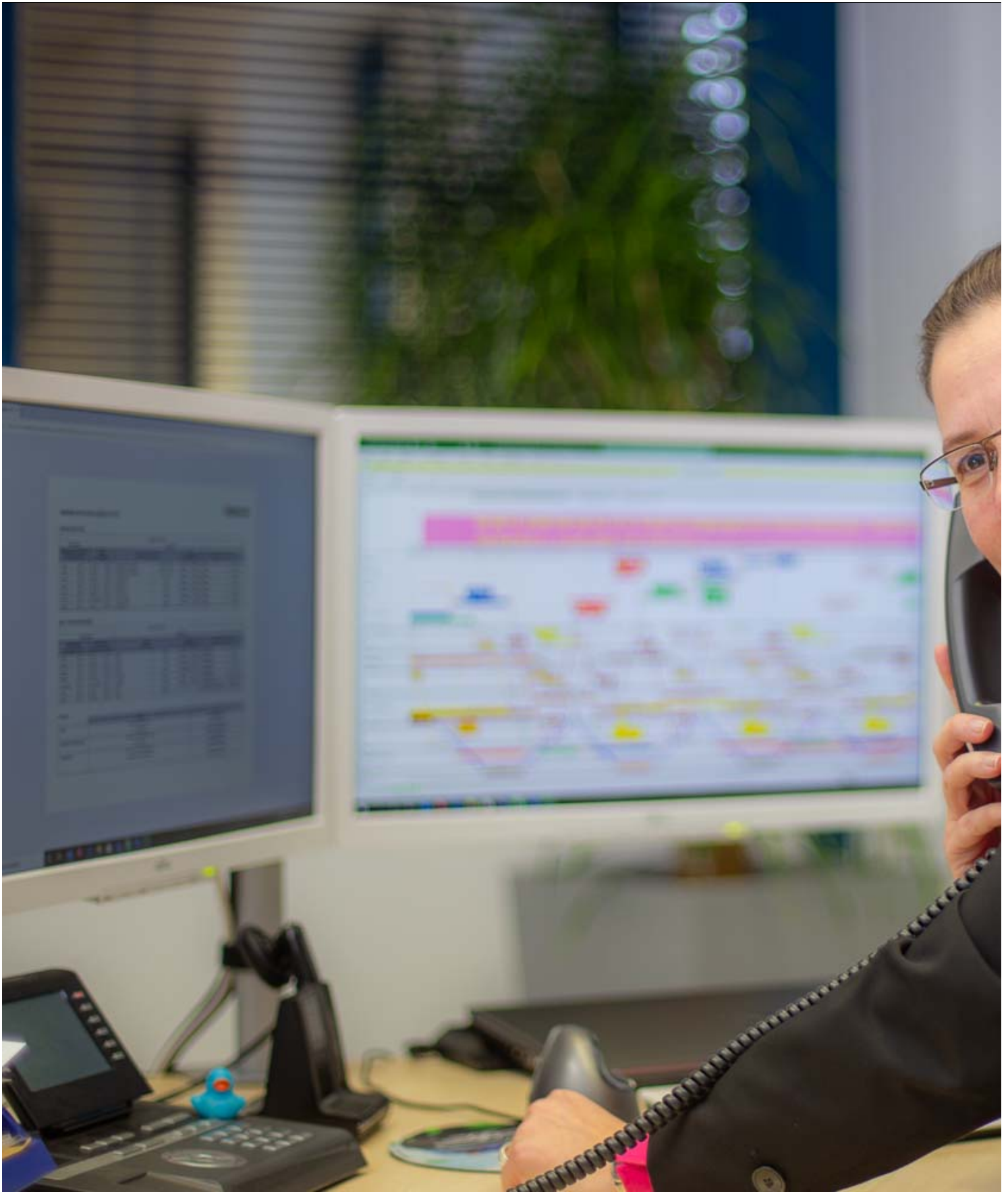


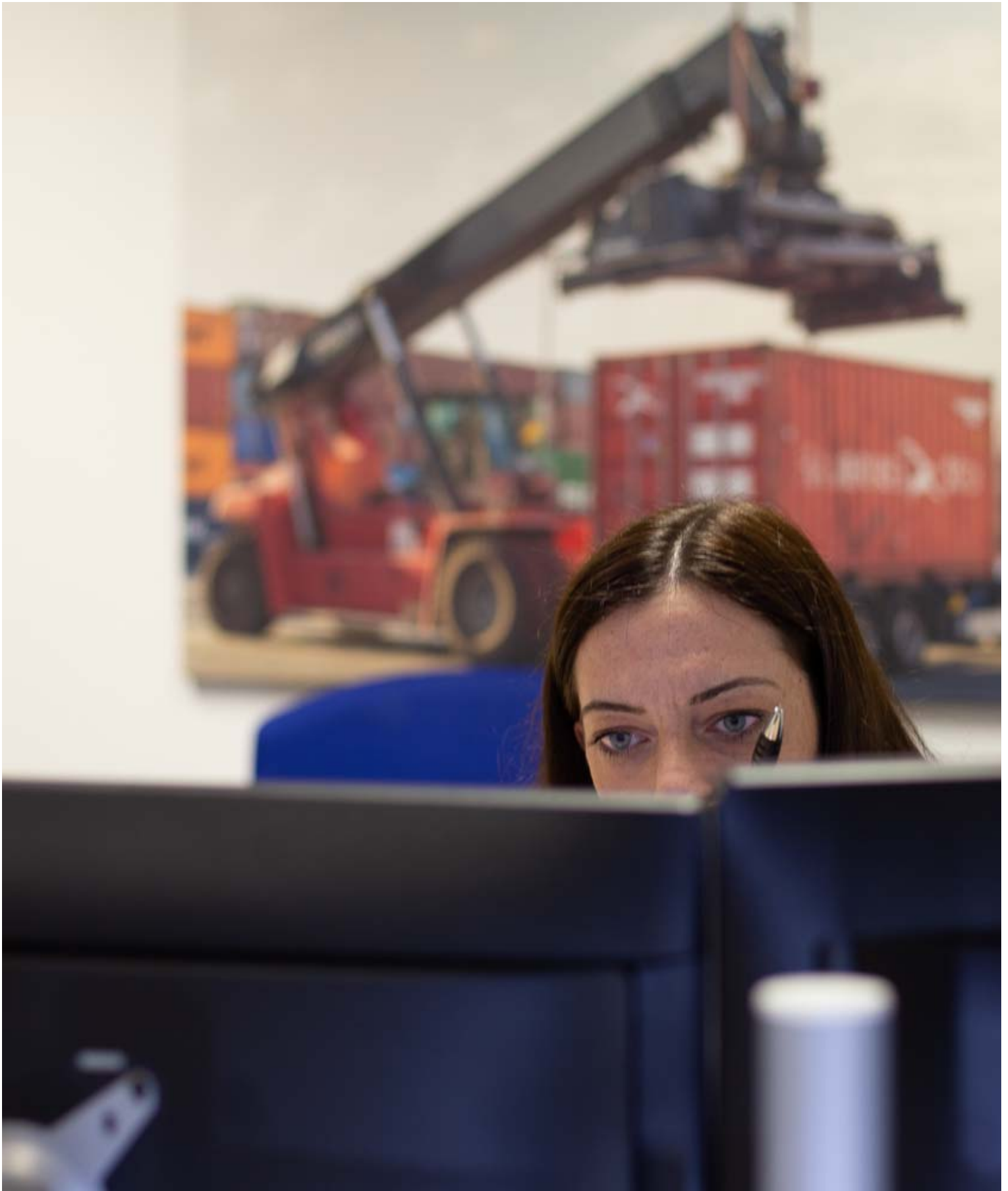
[Neuss Trimodal GmbH](https://www.neuss-trimodal.com/)

[Neuss Trimodal GmbH](https://www.neuss-trimodal.com/)

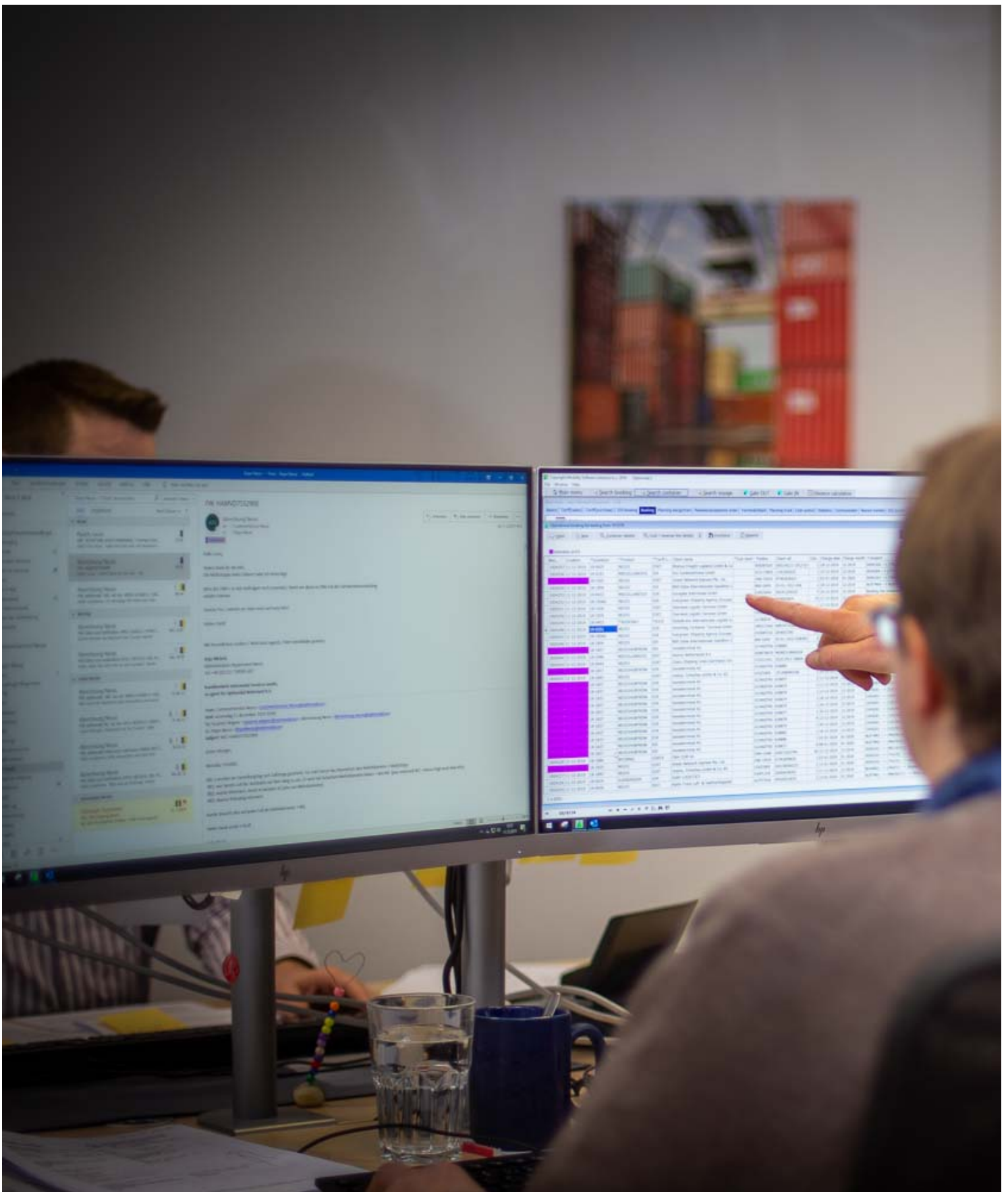
Neu

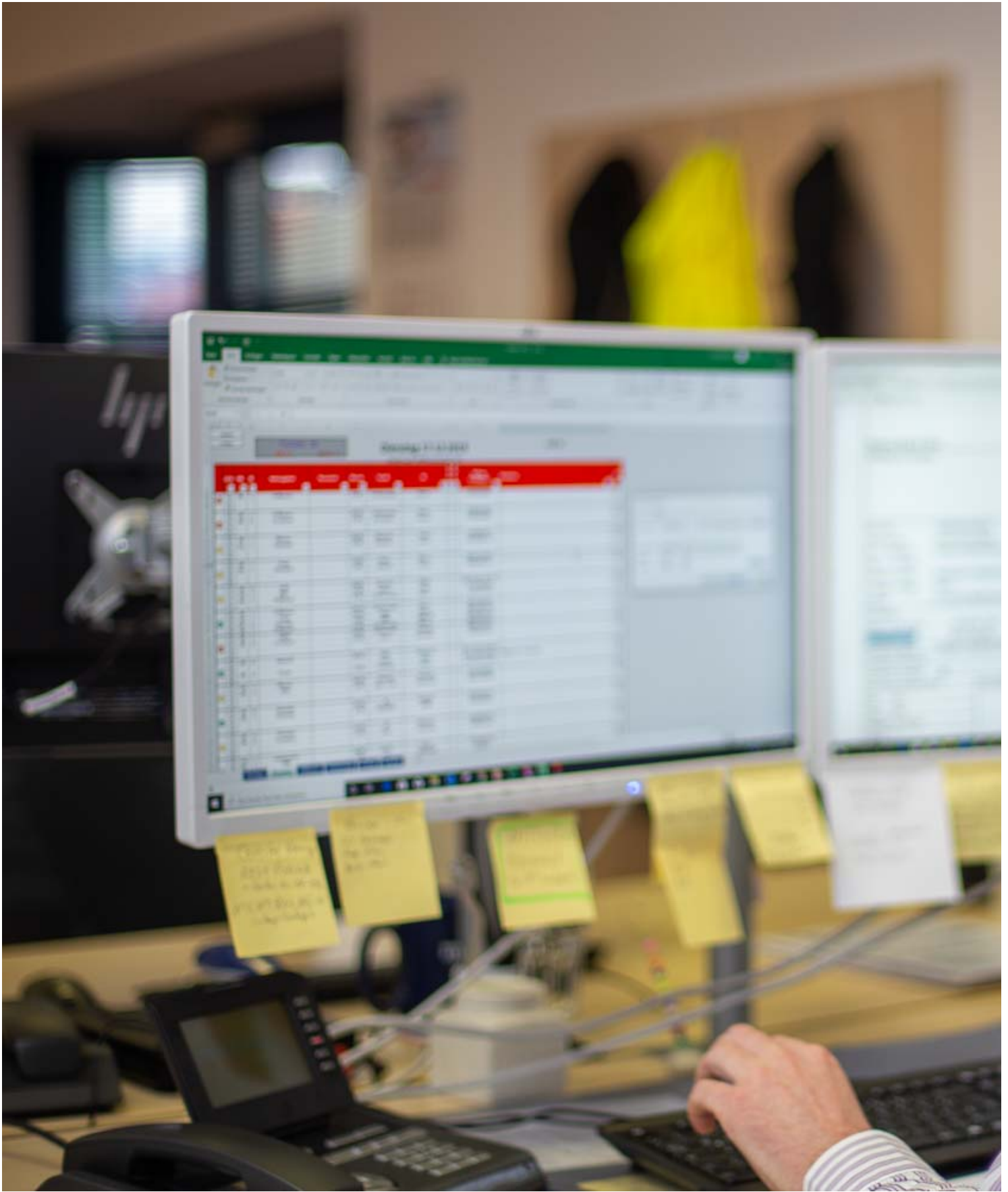




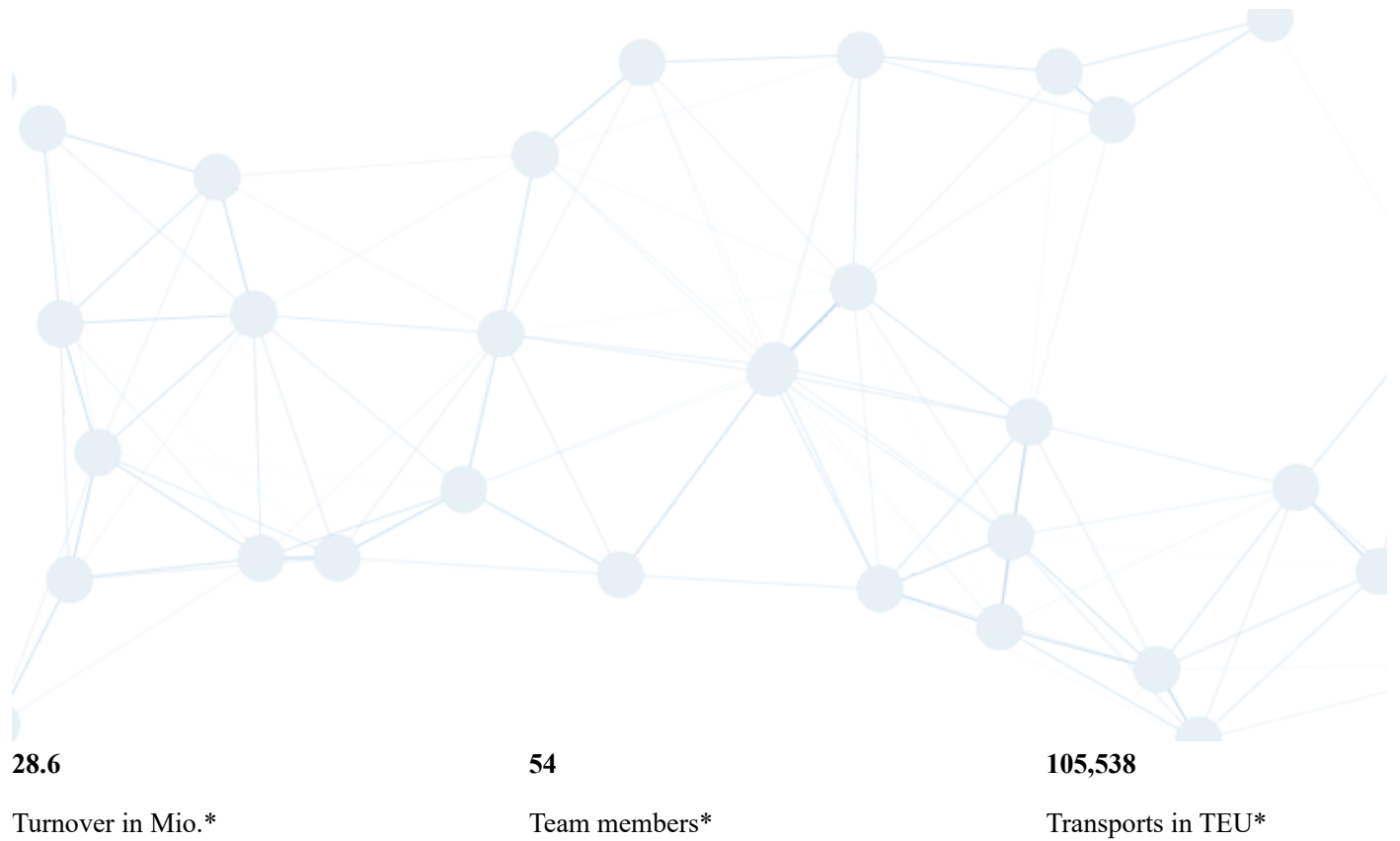








Figures, Data, Facts



* (Status 31.12.2022)

Charity

Do good and talk about it!

Most people in Western Europe are on the sunny side of life.

We greatly appreciate our high quality of life and do not forget the people who are not always positively affected by fate.

Therefore, we are strongly committed to children who are not on the sunny side of life, but more in the shadow of life.

We take our good fortune as an opportunity to distribute some of this and support less financially but with great engagement two foundations whose main focus is on supporting children.

Our engagement is not only to the [Herman Van Veen Foundation](#), but also to the [Dapper Kind Foundation](#).



DapperDagboel

Stichting Dapper

Herman van Veen-
Geschäftsstelle - Oe

Herrn
Karsten Sch
Managing Director
Optimodal Nederland B.V.
Tilsiter Str. 11
41460 Neuss

Herman van Veen-Stiftung
(Deutschland)

Sitz: D-47574 Goch

Geschäftsstelle:
Oelhausenweg 30
D-47803 Krefeld

Tel.: +49 (0)2151 563186

info@hermanvanveenstiftung.com
www.hermanvanveenstiftung.com

Krefeld, 15. Dezember 2019

Sehr geehrter Herr Scheidhauer, lieber Karsten,

seit fünf Jahren unterstützt Optimodal die Herman van Veen-Stiftung in vielfältiger Weise.

Unsere Dankbarkeit bezieht sich nicht nur auf die erfreuliche Spendentätigkeit, welche für die Verwirklichung unserer Stiftungsziele von elementarer Bedeutung ist, sondern auch auf die ideelle Unterstützung, durch die die Botschaft von Herman van Veen oder auch die Förderung der Kinderrechte verbreitet wird.

Darüber hinaus hast Du, lieber Karsten, in der Vergangenheit zahlreiche interessante und lukrative Sachspenden/Preise zu unseren Charity-Veranstaltungen beigetragen und jederzeit als positiver Gesprächspartner und „Botschafter im besten Sinne“ der Stiftung zur Verfügung gestanden.

Hierfür möchten wir Optimodal und Dir im Namen des Vorstandes der Herman van Veen-Stiftung von Herzen danken.

Hans-Werner Neske
Vorsitzender des Vorstandes

Heide Ecker-Rosendahl
stellv. Vorsitzende des Vorstandes

Vorstand: Hans-Werner Neske (Vorsitzender), Heide Ecker-Rosendahl (stellv. Vorsitzende),
Per-Olaf Ulrich (Schatzmeister), Ulrich Reismann; Geschäftsführer: Erich Mast
Steuernummer: 117/5863/1460
Stiftungsverzeichnis: 21.13-St. 1029
Aufsichtsbehörde: Bezirksregierung Düsseldorf

Spendenkonto
Sparkasse am Niederrhein

IBAN: DE78 3545 0000 1250 1024 62
BIC: WELADED1MOR

© Copyright 2020 Optimodal Nederland B.V.

- [LinkedIn](#)

[Scroll to top](#)

We use cookies to ensure that we give you the best experience on our website. By continuing to browse the site, you are agr to our use of cookies.

The protection of your data is important to us!

Cookies and Privacy Settings

We use cookies to ensure that we give you the best experience on our website. By continuing to browse the site, you are agreeing to our use of cookies.

Google Webfonts:

Click to enable/disable Google Webfonts.

Google Maps:

Click to enable/disable Google Maps.

Youtube Videos:

Click to enable/disable video embeds.

Google Analytics:

Click to enable/disable Google Analytics tracking.

Please check our settings page and opt out for cookies or functions you do not want to use and accept cookies.

[Impressum / Datenschutz](#)

Check to enable permanent hiding of message bar and refuse all cookies if you do not opt in. We need 2 cookies to store this setting. Otherwise you will be prompted again when opening a new browser window or new a tab.

Click to enable/disable essential site cookies.

Open Message Bar