

Stukwerkers Group

GENERAL PRESENTATION



Your Stevedore in the Port of Ghent



History

Stukwerkers Havenbedrijf NV - founded in 1338 - is *one of the oldest stevedoring companies* in Europe still ranked among the leading independent and most diversified stevedoring companies in Belgium.

Stukwerkers Group



Stukwerkers Havenbedrijf N.V. is a **private terminal operator** offering stevedoring and terminal services to its customers.

Our customers are **Carriers, Producing companies, Traders and Cargo-owners** seeking for a competitive port with a good draught and an excellent entry/exit point to the European Union.

Stukwerkers Havenbedrijf **offers:**

- Free berth guarantee
- Quick turnaround time
- Qualitative handling
- Unique European location for distribution
- Highways connecting south-north and west-east Europe
- All terminals are rail connected
- Intermodal barge solutions
- Warehouses are located alongside the deepwaterquays, bargequays and rails
- Competitive operations & tariffs

Stukwerkers Group



1. Stevedoring division

- 🌀 Stukwerkers Havenbedrijf NV
- 🌀 Algemene Houtbehandelingen NV

2. Container division

- 🌀 Ghent Container Terminal NV
- 🌀 Stukwerkers Havenbedrijf NV
- 🌀 Trimodal Terminal Brussels NV

3. Agency

- 🌀 De Baerdemaecker NV



Locations

- 🌀 Port of Ghent
- 🌀 5 terminals
- 🌀 More than 4 km quay length
- 🌀 600,000 m² storage space
 - 🌀 505,000 m² open storage space
 - 🌀 95,000 m² covered warehouses

Locations



Activities



- ⊗ Active in Port of Ghent
- ⊗ Active in Port of Brussels
- ⊗ Active in La Louvière
- ⊗ Active in Port of Zeebrugge

- ⊗ Provides the full range of shipping related services:
 - ⊗ Stevedoring
 - ⊗ Warehousing
 - ⊗ Forwarding



Activities

🌀 Stukwerkers handles about 2,5 million tonnes per year of an extensive range of commodities such as:

- 🌀 Iron and steel: coils, slabs, long products, wire, plates
- 🌀 Forest products: paper, pulp, timber, plywood
- 🌀 RO/RO: cars, trucks, high & heavy, motorcars, maffi-trailer
- 🌀 Project cargo: construction, windmills, equipment
- 🌀 General cargo
- 🌀 Containers, refrigerated cargo
- 🌀 Fertilizers and dry bulk: fertilizers, salt, woodchips



Stukwerkers Group

Cargo Handling - Warehouse - Distribution

Steel

Paper & Pulp

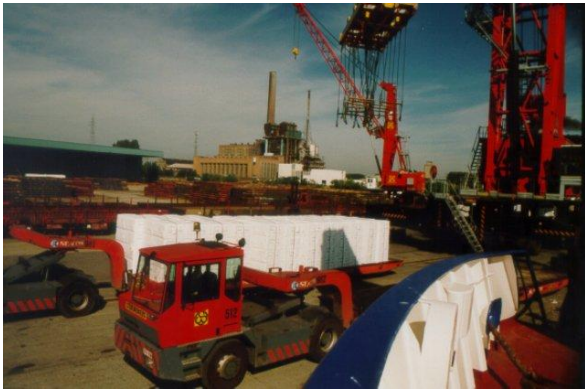
Containers

Bulk

Timber



Forest products - pulp handling





Paper reel handling

- Well equipped
- Adequate Lifttrucks/Warehouses
- Experienced: proven quality



Bulk handling





Steel terminals

- ⊗ Liftrucks with lifting capacity up to 45 tons
- ⊗ Mobile harbour cranes with cap. up to 144 tons in single use
- ⊗ Magnets for steel handling



Steel handling



DEDICATED STEELSHED

- ⊗ Surface of $\pm 7,000 \text{ m}^2$
- ⊗ Capacity $\pm 45,000 \text{ T}$ of coils
- ⊗ Especially designed and equipped for the handling and storage of high value coils
- ⊗ Temperature & humidity controlled
- ⊗ Rollerbridge crane 45 T
- ⊗ Loading/unloading inside the warehouse



Project cargo handling



UNI-LIFT



DUO-LIFT



Container terminals Ghent



Right Bank: Shortsea Terminal



- Rail connected in 2016
- Active barge intermodal services

Left Bank: Barge Terminal



- Rail connected
- Active barge intermodal services
- Daily rail connected to Italy (Mortara) by Shuttlewise

Trimodal Terminal Brussels NV



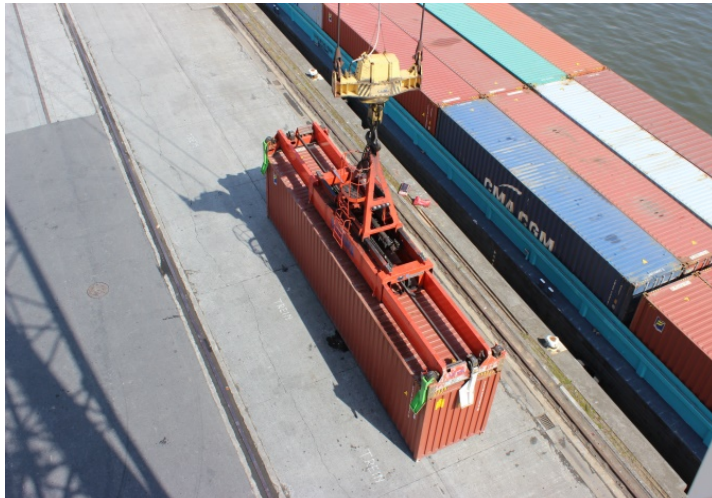
- ⊕ Joint venture Stukwerkers - Duferco Logistique - HTS
- ⊕ 17,000 m² terminal



Kluzendok



Mercatordok



Your Stevedore in the Port of Ghent

Equipment Ghent



6 mobile harbour cranes 18T - 63T - 100T - 144 T
lifting capacity



De Baerdemaecker NV



- ⌘ Port Agency (± 420 per year)
 - ⌘ Liner agency
 - ⌘ Tramping
 - ⌘ Protective agency
- ⌘ Forwarding
 - ⌘ Transport by road, rail and barge
 - ⌘ National and international
 - ⌘ Physical distribution with door-to-door solutions
- ⌘ Customs agents
 - ⌘ Custom clearances through EDI link with authorities
 - ⌘ Fiscal representation



Strengths

- ⌘ Independent and most diversified stevedore and terminal operator
- ⌘ Horizontal management structure
- ⌘ Documentation stream
- ⌘ Three modal terminals
- ⌘ Willing to invest in partnership
- ⌘ Quality and pricing ahead of the competition
- ⌘ Close contacts with principals
- ⌘ Independent forwarding agent
- ⌘ Intermodal and environmental company policy
- ⌘ AEO – certified



Stukwerkers Head Office

Port Arthurlaan 40 - 9000 Gent

Tel.+32 (0)9 251 25 45

Fax.+32 (0)9 251 61 81

HQ@stukwerkers.com

www.stukwerkers.be

Commercial Manager: Frank.Vanoutryve@stukwerkers.com